

EPSRC CENTRE FOR INNOVATIVE
MANUFACTURING IN



Welcome and Introduction



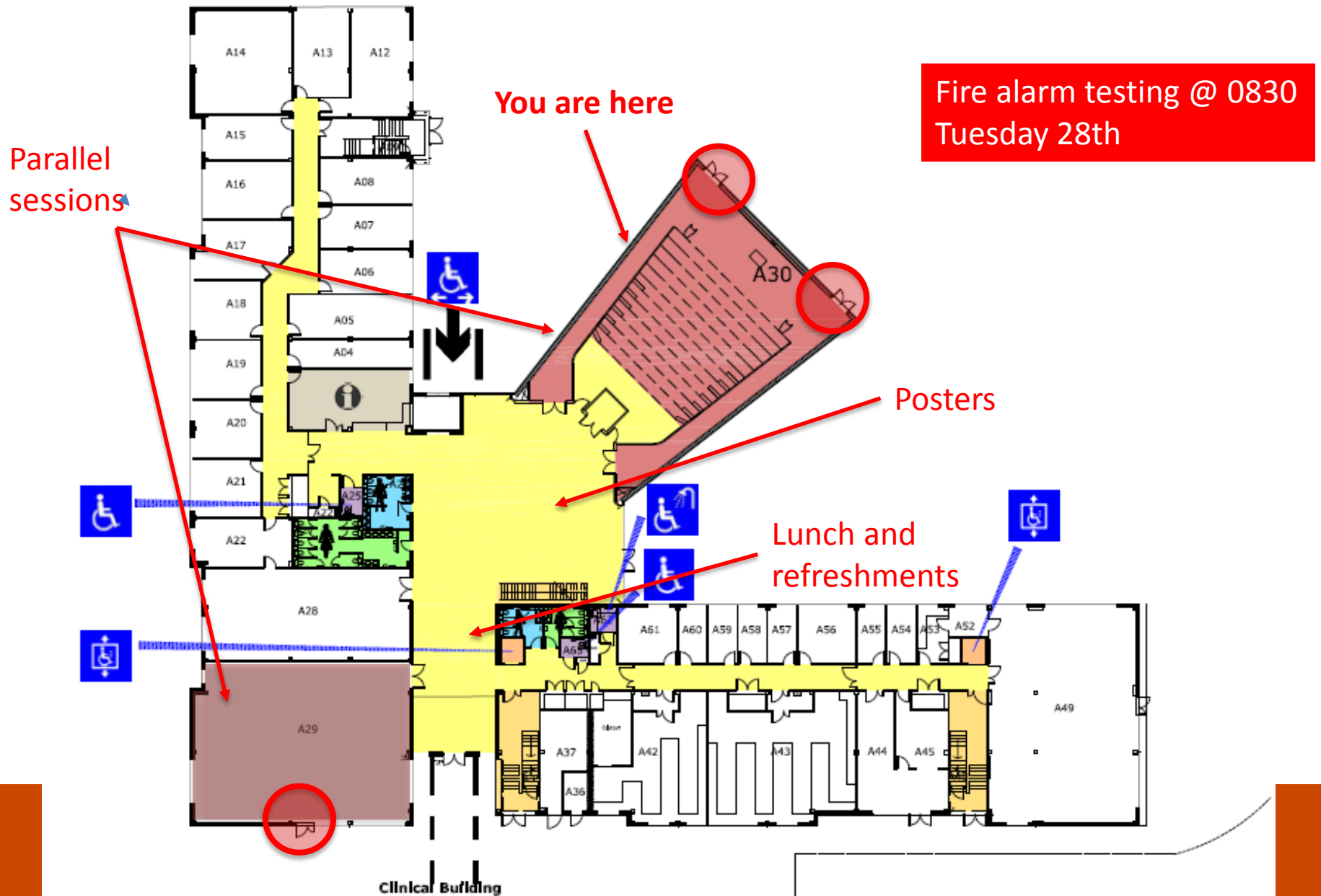
University of
Nottingham
UK | CHINA | MALAYSIA



Loughborough
University

UNIVERSITY OF
BIRMINGHAM

Vet School - A Floor Plan



Fire alarm testing @ 0830
Tuesday 28th



Exciting Programme

- CIM Activity (Academics, Post-doc and PhD researchers) in three themes:
 - Food Material & Structure
 - Sustainable Food Production
 - Upgrading Materials & Minimising Waste
- Industry & Charity inputs and views
- External academic contributions



Building for the Future

- Last year's Conference workshop & Industry workshop in Oct '17
- IUK/KTN's 'Food Sector R&D Need & Alignment with the 2017 Government Industrial Strategy'
- **Responding to the EPSRC 'Future Manufacturing Research Hubs 2018' Call**

Creating a National Hub

- CIM (EPSRC 2013-19)
- CSEF (RCUK 2013-19)
- NCEFE (HEFCE 2013-19)

EPSRC CENTRE FOR INNOVATIVE
MANUFACTURING IN



**Sheffield
Hallam
University**

**National Centre
of Excellence for
Food Engineering**



Project partners

EPSRC CENTRE FOR INNOVATIVE
MANUFACTURING IN



University of
Nottingham
UK | CHINA | MALAYSIA

Sheffield
Hallam
University



Brunel
University
London



UNIVERSITY OF
BIRMINGHAM



Loughborough
University



THE UNIVERSITY
of EDINBURGH



UNIVERSITY
of York



Vision

- The overall vision for the Hub is to make the UK the most efficient **converter of biomass** to deliver **safe food** for a **healthy nation** with the **lowest environmental impact**.



Grand Challenges

- **GC1: Sustainable conversion of all biomass to safe and nutritious food for a healthy population.** The objective is to create high quality and nutritious food products with less-refined, minimally processed ingredients to provide products designed at a range of length scales for optimal nutrient delivery.



Grand Challenges

- **GC2: Future-proofing today's supply chain to deal with tomorrow's finite resources.** The objective is to provide innovative future food manufacturing paradigms which are flexible and adaptive to societal and environmental stresses by minimising the use of resources and increasing production efficiency.

Enjoy the Conference

EPSRC CENTRE FOR INNOVATIVE
MANUFACTURING IN

